

Pollution Solutions

Litter

- Prevent litter such as plastics and metals from entering storm drains
- Keep trash cans lids on tight to prevent trash from escaping
- Collect leaves and other organic matter from entering storm drains

Erosion

- Landscape with native plants and aggregate
- During construction, use screening to catch loose soil from washing into storm drains

Chemicals

- Keep lids tight on detergents, paints, and solvents
- NEVER pour unused chemical into storm drains

Automotive Fluids

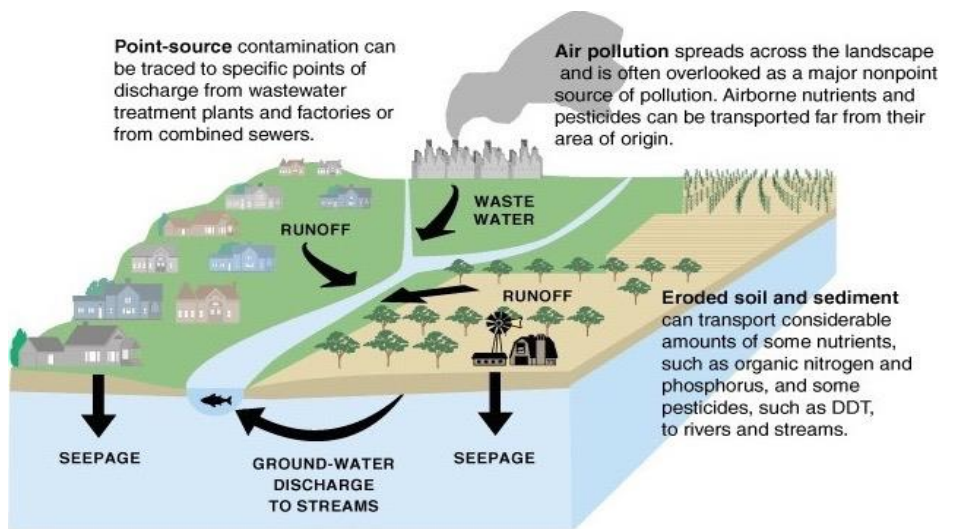
- Clean up spills. Oils may be taken to the City's recycle station located at 470 Denver Trail.

Industry

- Report illegal discharge to the City
- Commercial businesses that use potentially hazardous chemicals must notify the City of Azle Fire Department, supply backflow prevention devices, and submit to regular inspections

Agriculture

- Use biodegradable herbicides and pesticides
- Avoid using fertilizers with high nitrogen and phosphorous content



Water Pollution: Facts and Prevention

Water pollution can be defined in many ways. However, it simply means one or more substances have built up in water to such an extent that they cause problems for aquatic life, animals, or humans. The items listed to the left become deposited in Eagle Mountain Lake through storm drains and can degrade water quality. Therefore, it is up to every citizen and patron of the lake to prevent these contaminants from entering our source of drinking water and recreation.

The Azle Water and Wastewater Treatment Plants monitor water quality of influent and effluent; furthermore, the Texas Commission on Environmental Quality performs additional water quality testing to assure that potentially harmful contaminants are not an issue in our drinking water, or being introduced into the lake through wastewater effluent.

As part of a Storm Water Management program, the City implemented a *Storm Water Ordinance* as another important

effort to control and prevent pollution from entering our source water. Follow this link for more information.

<http://www.cityofazle.org/index.aspx?nid=281>

Another important effort by the City to prevent pollution is Household Hazardous Waste Collection Day. This event is held twice annually. We collect items such as chemicals, tires, light bulbs, paints, etc. Dates and times may be found at <http://cityofazle.org> in addition to links for more information on Water, Wastewater, and Storm Water Management. More detailed information on water pollution may be found by following the links below:

http://www.tceq.com/agency/water_main.html

<http://water.epa.gov/polwaste/>

<http://www2.epa.gov/laws-regulations/summary-clean-water-act>

<http://eschooltoday.com/pollution/water-pollution/what-is-water-pollution.html>