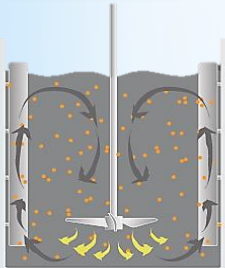


The Water Treatment Process

The Azle Water Treatment Plant produces high quality water that exceeds State drinking water standards for removal of bacteriological and chemical contaminants. The treatment process involves disinfection, coagulation, flocculation, sedimentation, filtration and pH adjustment. We continually test every stage in the process to assure quality. Plant tours are available by appointment, please call 817-444-3751. The diagram below illustrates and briefly describes each stage.

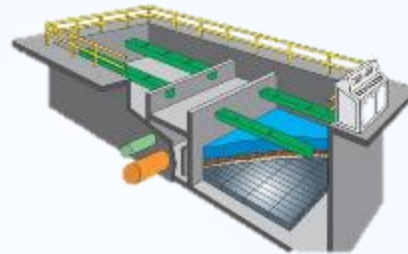
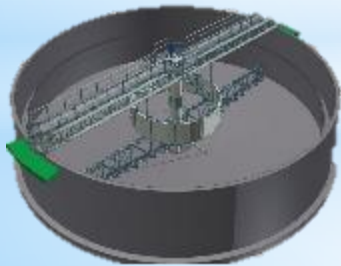


1. Our raw water pump station is capable of supplying 6 million gallons of raw water per day from Eagle Mountain Lake.

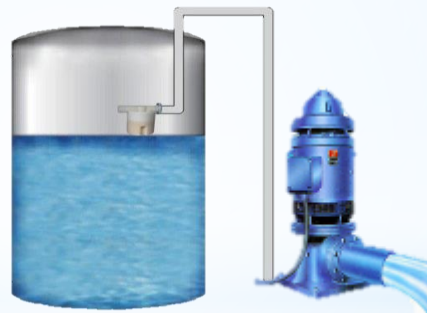


2. Compounds are added and rapidly mixed into the raw water to disinfect and coagulate particles.

3. In this stage, particles such as silt begin to attach to each other in the flocculation chamber, settle to the bottom, and are removed through the bottom of the sedimentation chamber—further clarifying the water, which flows to the next stage.



4. Filtration occurs when water enters the filters and continues through layers of anthracite coal and sand. Just after this stage, pH is adjusted to produce a water that is non-corrosive to pipes in the distribution system.



5. 2.5 million gallons are stored on site to assure adequate supply. An additional 1.5 million is available in the two elevated storage tanks located within the city.



6. Safe potable water is pumped to your home through the distribution system.