



Community News

Quarterly Newsletter

City Council Adopts 2015-2016 Budget

Azle City Council adopted the City's Fiscal Year 2015-2016 budget at a special meeting on September 8, 2015. The City of Azle's Fiscal Year begins October 1 and ends September 30. The local economy, and the aftermath of a prolonged drought, impact this budget. Overall, operating revenues are projected to rise moderately across all funds except the Utility Fund. 2014 appraised ad valorem property values increased \$11,543,706 (1.75%) from 2013 values. As a result, Council approved a combined tax rate of \$0.6795 per \$100 for FY2015-2016. This represents a \$0.0115 cent increase over the FY 2014-2015 rate and will generate \$77,168 more in property tax revenue. As a result, this budget attempts to maintain service and employee levels and provide improvements where possible.

Council and Staff continued their efforts this past year to improve the quality of life of Azle residents:

- ✓ Took delivery of a new ladder truck for the Fire Department
- ✓ Hired the City's first full-time Economic Development Director with funding from the Municipal Development District (MDD) and began development of a marketing plan
- ✓ Replaced and extended the Kerry Ln water line
- ✓ Completed reclamation of three streets
- ✓ Continued to enhance communication efforts by developing a Police Department Facebook page
- ✓ Refurbished the City's raw water intake platform

FY 2015-2016 Budget includes:

- ✓ Pays off all Golf Course related debt
- ✓ Capital projects include drainage projects on Ash St and Shady Ln, Main St sewer line installation, slip-line/ pipe burst sewer lines on Skylark, Glenhaven, and Ferndale, and relocation of a water line crossing SH199 to accommodate future highway construction
- ✓ Through the Street Maintenance Fund, four streets will be improved this budget year; Industrial, Golfer's Way, Kerry Ln (from Redbud to Jackson Trl) and S. Stewart (from Main St - Silver Creek Rd)
- ✓ Increase in water and sewer base rates
- ✓ Purchase three new police cars, two replacement warning sirens, new HVAC for the BJ Clark Building, expand parking lot at Central Park and reclaim streets in Shady Grove Park, and provide engineering study to determine best location for a splash pad
- ✓ 2% cost of living increase for employees
- ✓ Court Technology Fund will provide funds to purchase software that will allow online payment of citations
- ✓ Development of a mobile app for the City's website

The City continues to be on a solid financial foundation as we prepare for the coming years. For a complete look at the FY2015-2016 budget, visit the city's website.

City Receives First Award for Outstanding Achievement in Popular Annual Financial Reporting

An Award for Outstanding Achievement in Popular Annual Financial Reporting has been presented to the City of Azle by the Government Finance Officers Association for its annual financial report for the fiscal year ended September 30, 2014. The award is a prestigious national award recognizing conformance with the highest standards for preparation of state and local government popular reports.

In order to receive an Award for Outstanding Achievement in Popular Annual Financial Reporting, a government unit must publish a Popular Annual Financial Report, whose contents conform to program standards of creativity, presentation, understandability and reader appeal.

Inside this issue:

Who to Call	2
CAFR Award	2
Free Library Programs	2
City Holidays	2
November 3 Election	3
Daylight Savings Time Ends	3
Free Movie in the Park	3
Report Concerns	3
Water and Sewer Base Rates Increase	4

WHO TO CALL

City Hall/Utilities 817-444-2541
 Police/Fire 911
 (Non-emergency) 817-444-3221
 Animal Control 817-444-8215
 Permits 817-444-4128
 Public Library 817-444-7216
 Senior Center 817-444-0070

Mayor:
 Alan Brundrett 817-800-5199
 azlemayor@gmail.com
 Mayor Pro-Tem:
 Bill Jones 817-444-8544
 Billjones_1@charter.net

Councilmembers:
 Dr. William Chambers 817-270-3627
 doctorsoffice@drwilliamchambers.com
 Paul Crabtree 817-444-2277
 crabtree4azle@gmail.com
 Rouel Rothenberger 817-237-6819
 roueljr@yahoo.com
 Lee Barrett 817-692-8954
 barrett4azle@gmail.com
 David McClure 972-880-7495
 david.mcclure@charter.net

Public Meetings

City Council meets the first and third Tuesday of each month in the City Council Chambers at City Hall. Agendas are posted the Friday before a meeting on the website and on the bulletin board at City Hall. Agendas for upcoming meetings and minutes of previous meetings are available on the city website.

Other Monthly Meetings
Planning & Zoning meets the first and third Thursday of the month.

Crime Control & Prevention District meets the second Thursday of each month.

Municipal Development District meets the second Tuesday of each month.

Parks & Recreation meets the third Monday of each month.

Meetings listed above are held in the Council Chambers at City Hall, 613 SE Parkway.

Traffic & Transportation meets the second Tuesday of each month in the BJ Clark Annex - 603 SE Parkway.

Library Board meets the second Tuesday of each month at 1pm in the Azle Memorial Library.

Certificate of Achievement for Excellence in Financial Reporting Awarded to the City of Azle

The Certificate of Achievement for Excellence in Financial Reporting has been awarded to the City of Azle for the twelfth consecutive year by the Government Finance Officers Association of the United States and Canada (GFOA) for its comprehensive annual financial report (CAFR) for the year ended September 30, 2014. The Certificate of Achievement is the highest form of recognition in the area of governmental accounting and financial reporting, and its attainment represents a significant accomplishment by a government and its management.

The CAFR has been judged by an impartial panel to meet the high standards of the Certificate of Achievement program including demonstrating a constructive “spirit of full disclosure” to clearly communicate its financial story and motivate potential users and user groups to read the CAFR. In order to be awarded the Certificate of Achievement, a government must publish an easy to read and efficiently organized report.

Azle Memorial Library Special Events

333 W. Main St., Azle, TX 76020
 www.azlelibrary.org | 817-444-7216

A Burst of Color

Want to get into the Fall spirit? Join us on October 29 from 4:00-5:30 pm in the Children's Area for A Burst of Color. We will make beautiful leaves and pumpkins in time for the fall holidays. Fun and free for ALL!



Program on Alzheimer's - November 3, from 2-3:30pm:

The Azle Library is partnering with the Alzheimer's Association of North Central Texas to offer an informational program about memory loss, dementia and Alzheimer's disease. If you or someone you know is affected by Alzheimer's disease or dementia, it's time to learn the facts. This program provides information on detection, causes and risk factors, stages of the disease, treatment, and much more.

The program is FREE, but reservations are appreciated. Please call 800-272-3900 to reserve a space.

Santa @ Your Library!



Join in the festivities on December 17 at 6pm. All are invited to the Library's Christmas celebration! Come hear a special Christmas book recited, decorate gingerbread houses, and visit with Santa Claus and some of his special helpers! Bring your cameras for photos! Free event.

CITY HOLIDAYS

Azle Municipal Offices will close:



THANKSGIVING
 November 26 & 27



NEW YEAR'S
 January 1



Police and Fire services will be available by calling (817) 444-3221, or 9-1-1 in case of emergency. For water/sewer emergencies, please call (817) 444-3221.

Community Waste Disposal will **NOT** run their regular trash route on these Holidays.

The City of Azle is not having an election this November, but the State of Texas and other government entities are . .

November 3, 2015 Constitutional Amendment Election

The State of Texas has 7 Propositions on the Ballot this November that will amend the Texas Constitution if approved by the voters. To view these propositions, please visit the Texas Secretary of State's website: www.sos.state.tx.us/elections

Early Voting October 19 - October 30

Please visit our website www.cityofazle.org for complete details on early voting and election day times and locations.

As a courtesy to our residents, the City is allowing Tarrant County to conduct the November 3, 2015 Constitutional Amendment Election at the B.J. Clark Annex Room 4, 603 SE Parkway. Residents in Parker County will vote at the Azle Masonic Lodge, 257 West Main St.

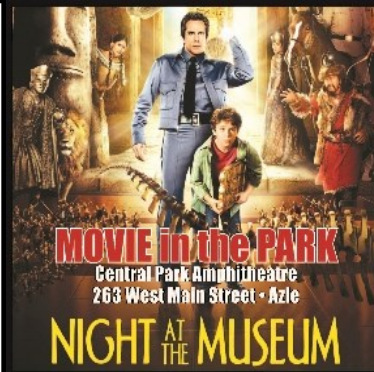
Azle City Secretary's Office 817-444-7101 / nzenk@ci.azle.tx.us



Don't forget to set your clocks back one hour on November 1.

Change Your Smoke Detector Batteries

The National Fire Protection Association (NFPA) recommends you schedule battery replacement for your smoke detectors the same day you change your clocks from daylight saving time to standard time in the fall.



**Saturday
Nov. 14th • 7 pm
"Night at the Museum"**

**Admission is
FREE!**

Bring your lawn chairs and blankets to relax under the stars and enjoy a great movie with FREE popcorn!



Presented by the Special Event Advisory Board

ADMIT ONE

For questions, call (817) 444-7127.



Report Non-Emergency Concerns 24/7

The City of Azle wants its citizens to be able to report any non-emergency concerns no matter where they are or what time of day it is. The Citizen Request Tracker™ (CRT™) feature on the city website makes this possible.

Citizen Request Tracker™ is a reporting and tracking tool allowing citizens to report non-emergency issues (street problems, code violations, animal control concerns, etc) to the City of Azle through the website (www.cityofazle.org) or iPhone App. Use the *Report A Concern* quick link on the front page of the website. Once a request is submitted, it's automatically routed to the appropriate staff for follow up. The citizen is kept in the loop on the status of their concern through the status update feature that notifies the citizen of changes made to their request (assigned, scheduled, completed, etc.).

The CRT™ iPhone App allows citizens to submit requests right from their iPhone.

- Uses GPS to pinpoint your location
- Take pictures with your phone to submit with your request
- See a history of your requests
- Profile information is stored on your app

The City is working on a solution that will allow Android users access to a mobile version of Azle's CRT™.

Water and Sewer Base Rates to Increase October 1, 2015

The City of Azle 2015-2016 annual budget includes an increase in water and sewer base rates. Usage rates remain unchanged. This is the first time base rates have increased since 2001. Watering restrictions and conservation efforts during the past few years have resulted in a reduction in customer's water usage. While restrictions are currently lifted, customer usage has not returned to pre-restriction levels. Over the past three years, water purchases have decreased 13.2% and wastewater volumes have decreased 5.4%, resulting in expenses exceeding revenues by approximately \$229,712. While sales are decreasing, costs are not falling at an equal rate. Even after a careful review of expenses and reducing 2014-2015 appropriations by \$96,512 from 2013-2014, water and sewer expenses continue to outpace revenues. Raw water costs and debt services costs are fixed costs that cannot be reduced. Additionally, personnel and maintenance costs have been reduced to the greatest extent possible while still maintaining essential operations.

The average increase in water base rates is approximately 5.4% and in sewer base rates is approximately 5.6%. The majority of in city residential customers base rate will increase \$1.32 per month or 3.17% of the monthly bill based on average consumption. The majority of commercial customers located inside the City will see an increase of \$1.77 per month in their base rate or approximately 2.72% in their monthly bill based on average consumption. Sewer customers will see an average increase of 3.21% for residential customers based on the city wide winter average and 1.65% for commercial customers based on average usage. ***While rates go into effect on October 1, 2015, the actual increase will not be reflected until the November bill.***

Contact the Utility Billing Department at (817)444-2541 for additional information or questions regarding your bill.

Rate Comparison

Water Customers Inside City

Residential				Commercial			
Meter Size	Current Base Rate	New Base Rate	Increase	Meter Size	Current Base Rate	New Base Rate	Increase
5/8"-3/4"				5/8"-3/4"			
1"	\$24.63	\$25.95	\$1.32	1"	\$29.63	\$31.40	\$1.77
1 1/2"	\$35.71	\$37.63	\$1.92	1 1/2"	\$42.96	\$45.15	\$2.19
2"	\$52.71	\$55.53	\$2.82	2"	\$63.41	\$66.64	\$3.23
3"	\$72.90	\$76.81	\$3.91	3"	\$87.70	\$92.17	\$4.47
4"	\$169.95	\$179.06	\$9.11	4"	\$204.45	\$214.87	\$10.42
	\$286.69	\$302.06	\$15.37		\$344.89	\$362.47	\$17.58

Water Customers Outside City

Residential				Commercial			
Meter Size	Current Base Rate	New Base Rate	Increase	Meter Size	Current Base Rate	New Base Rate	Increase
5/8"-3/4"				5/8"-3/4"			
1"	\$36.95	\$38.93	\$1.98	1"	\$44.45	\$46.71	\$2.26
1 1/2"	\$53.57	\$56.44	\$2.87	1 1/2"	\$64.45	\$67.73	\$3.28
2"	\$79.06	\$83.30	\$4.24	2"	\$95.11	\$99.96	\$4.85
3"	\$109.36	\$115.22	\$5.86	3"	\$131.56	\$138.26	\$6.70
4"	\$254.92	\$268.58	\$13.66	4"	\$306.67	\$322.30	\$15.63
	\$430.04	\$453.09	\$23.05		\$517.34	\$543.70	\$26.36

Sewer Customers

Residential	Current Base Rate	New Base Rate	Increase	Commercial	Current Base Rate	New Base Rate	Increase
	\$20.25	\$21.40	\$1.15		\$25.25	\$26.70	\$1.45



613 SE Parkway
Azle, Texas 76020
Tel: 817-444-2541
Fax: 817-444-7149

This newsletter will be printed quarterly and available online at www.cityofazle.org